



somfy.



Barriers



- BARRIERS ■
- ACCESSORIES FOR BARRIERS ■

Levixo 30 / 50 RTS

Barriers







UP TO 5 M



Road barriers robust, durable and suitable for intensive use

- Two models:
 - > 3 metres – opening in 4 seconds
 - > 5 metres – opening in 8 seconds
- Suitable for intensive use up to 1,200 openings and closings/day
- An extensive range of accessories for a professional installation
 - > Anchor base for concrete foundation
 - > Boom rest fork
 - > Photocell mounting columns
 - > Protection rubber for boom

Packs

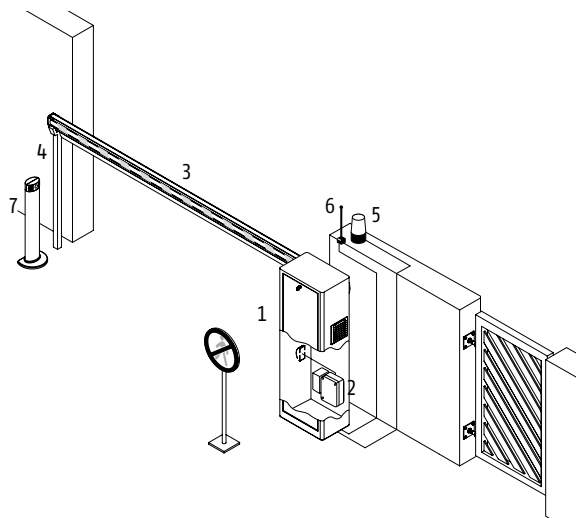
						Packs per pallet
Levixo 30 motor	Levixo 50 motor	Control box Levixo RTS	Levixo boom 3 m	Levixo boom 5 m	Boom rest fork Ref. 9017044	

Levixo 30 RTS Ref. 1216339	●	-	●	-	-	-	6
Levixo 50 RTS Ref. 1216340	-	●	●	-	-	-	6
Levixo boom 30 Ref. 9018250 Ref. 9017041	-	-	-	●	-	-	4 24
Levixo boom 50 Ref. 9018251 Ref. 9017042	-	-	-	-	●	-	4 24
Levixo rest fork Ref. 9017044	-	-	-	-	-	●	30

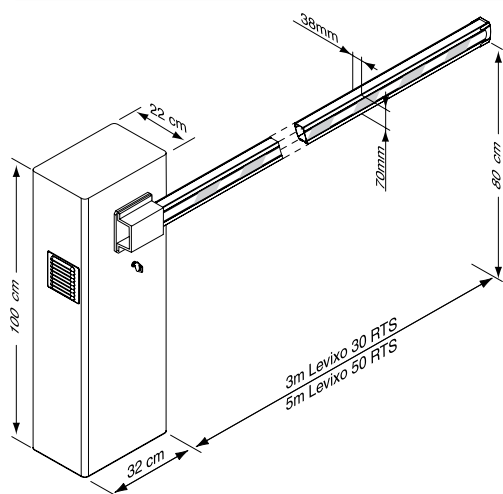


Standard installation

1. Levixo 30/50 motor
2. Control box
3. Boom
4. Boom rest fork
5. Amber light
6. Outdoor antenna
7. Column for photocell



General overall size



Technical characteristics

Mains power supply	230 V	
Maximum power consumption	300 W	
Accessories power supply	24 V / 180 mA	
Maximum number of operations/day	3 m	1,200
	5 m	600
Motor torque	3 m	85 Nm
	5 m	250 Nm

Opening time	3 m	4 s
	5 m	8 s
RTS radio frequency	433.42 MHz	
Number of remote controls	36 channels maximum	
Index of protection	IP 24	
Operating temperature	-10°C to +55°C	
Tested for	3 m	2 million openings and closings
	5 m	1 million openings and closings

Special accessories



Amber light Master Pro
230 V blinking

Ref. 9015034



Photocells Master Pro Bitech

Ref. 1841155



Columns

Ref. 9017210



Protection rubber for boom

Ref. 9017045

Accessories for barriers

SPECIAL ACCESSORIES FOR BARRIERS



Ref. 9018250 (per 4)

Ref. 9017041 (per 24)

Boom 3 meter length (for Levixo 30)

Aluminium boom profile.

Weight tuned to barrier compensation spring.



Ref. 9018251 (per 4)

Ref. 9017042 (per 24)

Boom 5 meter length (for Levixo 50)

Aluminium boom profile.

Weight tuned to barrier compensation spring.



Ref. 9017045

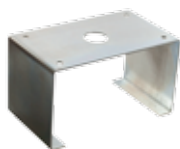
Protection rubber for boom

To soften the contact in case of shock on a vehicle.

To make the boom more visible.

May be put on the lower and/or upper boom's edge.

Supplied in 12 m roll with 4 end caps.



Ref. 9017043

Anchor base for barrier foundation

For a robust fixation of the barrier.

To be sealed in a concrete foundation.



Ref. 9017044

Rest fork

To support the boom's end when the movement is over.

Release static efforts on barrier mechanics for a better lifetime.

To be sealed in a concrete foundation.



Ref. 9017210

Columns for photocells Master Pro (for gates and barriers)

To hold photocells in place at a remote distance from the barrier.

Photocells beam 50 cm above the ground.

Hollow structure for cables to run inside the column.

Fixation by 4 screws (not supplied).

LEBANON

Abi Habib, Chaaya & Azar Bldg
5th floor
Pierre Gemayel Street
PO Box 90-873, Jdeideh
El Metn, Lebanon
T +961 1 888 391
F +961 1 888 392
E contact_lb@somfy.com

CYPRUS

Nicolaou Pentadromos Centre
5th floor
Office 503
Pentadromos junction
PO Box 56150
Limassol 3025, Cyprus
T +357 25 34 55 40
F +357 25 34 19 48
E contact_cy@somfy.com

JORDAN

16, Al Mahara Street
Al Rawabi District
11810 Wadi Al Sir
Amman, Jordan
T +962 6 582 16 15
F +962 6 582 83 39
E contact_jo@somfy.com

SYRIA

T/F +963 955 580 700
E contact_jo@somfy.com

IRAN

Unit 11, No. 1831
Opposite to Faculty of Economics
North Kargar Avenue
Postal Code 1413683161
Tehran, Iran
T +98 21 88 63 52 43
T/F +98 21 88 63 50 67
E contact_ir@somfy.com

KSA - JEDDAH

Amalkis Center, 2nd floor
Office 12, King Abdul Aziz road
Shati #3 District
PO Box 118866
Jeddah 21312, KSA
T +966 2 607 7265
F +966 2 612 0564 Ext.100
E contact_sa@somfy.com

KSA - RIYADH

Ma'az Center, Block B
2nd floor, Office 17
Salah El Dine Street
Sulaymaniyah
PO Box 245275
Riyadh 11312, KSA
T +966 1 810 1359
F +966 1 214 8201
E contact_sa@somfy.com

KSA - DAMMAM / BAHRAIN

Port Gate Bldg, Port road
Dammam, KSA
T +966 3 814 5715
F +966 3 814 4957
E contact_sa@somfy.com

KUWAIT

Office 19, Waha Mall, Al Dajij
Forwaniya, Kuwait
T +965 2 43 48 901
F +965 2 43 48 906
E contact_kw@somfy.com

SOUTH AFRICA

Lagoon Beach Office Park
Office 2, Block B
3 Lagoon Beach Road
Milnerton 7441, South Africa
T +27 21 551 9698
F +27 21 551 4024
E contact_zs@somfy.com

UNITED ARAB EMIRATES

Jebel Ali Free Zone
PO Box 61456
Dubai, UAE
T +971 4 88 32 808
F +971 4 88 32 809
E contact_gulf@somfy.com

EGYPT

70 Al Thawra Street
6th Floor, Heliopolis
Cairo, Egypt
T/F +20 2 2291 2600
E contact_eg@somfy.com

TUNISIA

Tanit Center, Rte Gp9
2046 Sidi Daoud
La Marsa, Tunisia
T +216 70 93 74 77
F +216 70 93 63 70
E contact_tn@somfy.com

MOROCCO

29, Rue Ibnou Majid Al Bahar
Casablanca, Morocco
T +212 5 22 44 35 00
F +212 5 22 44 35 23
E contact_ma@somfy.com

ALGERIA

19, Cirta Hydra road
16 035 Alger, Algeria
F +213 21 48 05 66
M +213 770 17 11 17

TURKEY

Kisikli Cad. Basaran Is Merkezi
No: 3, K: 2, Altunizade, Üsküdar
Istanbul 34662, Turkey
T +90 216 651 30 15
F +90 216 651 30 17
E contact_tr@somfy.com